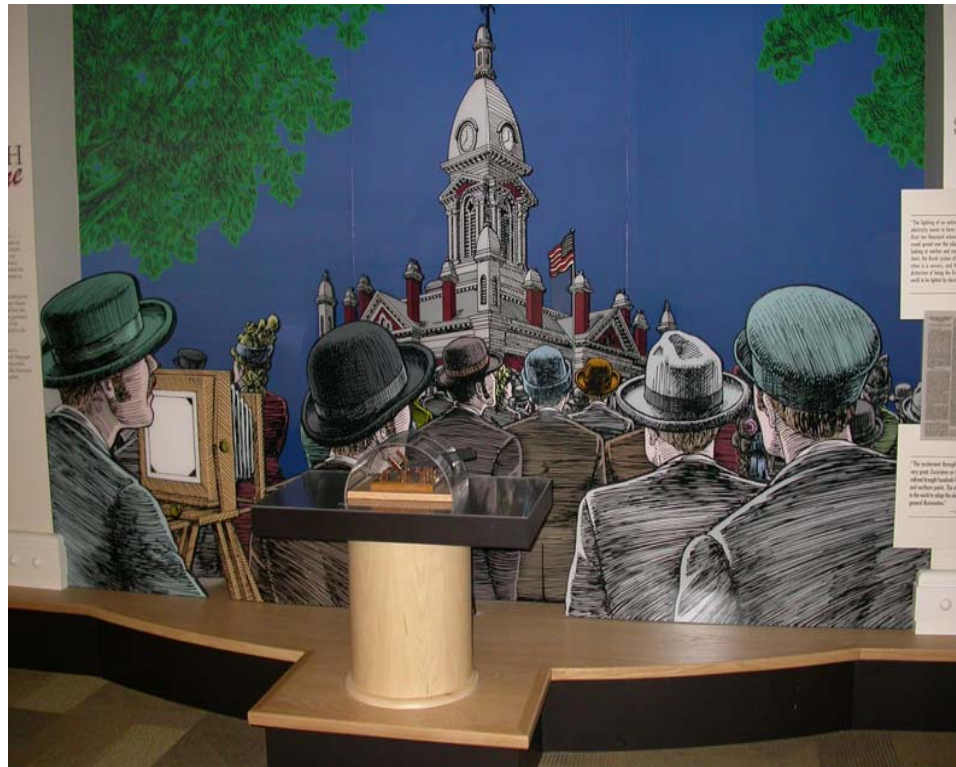


1st floor display

Find the
electric
light.



Flip the
switch.

1st floor display

Find the
train whistle.



Pull.

1st floor display

Find the rattlesnakes.



Walk close by.

1st floor display

Find trading and commerce.



Play games.

1st floor display

Find
Chief
Godfrey.



Listen to
story.

1st floor display

Find the
plow.



Push.

1st floor display

Find the glacier.



Open drawers.

Look through magnifying glass.

1st floor display

Find the heritage tourism display.



Turn the wheel.

How many have you visited?

1st floor display

Find the
juke box.



Push
button
and listen.

TRY
4-6-0-1

2nd floor display

Find the
scooters.



Ride.

2nd floor display

Find the
switchboard.



Listen.

2nd floor display

Find the
model train.



Watch.

2nd floor display

Find the
dig site.



Dig.

2nd floor display

Find the embosser in ticket office.



Make bookmark.

2nd floor display

Find the wagon.



Open barrel.
Have adult read sign.

2nd floor display

Find the
Wildlife of
Wabash
County
display.



Play.

2nd floor display

Find the
war items.



Look.

2nd floor display

Find the
banana bin.



Smell.

2nd floor display

Find the
Morse code
machine.



Send
message.

2nd floor display

Find the
map.



Stand
where
you live.